



Advanced Heating  
and Hot Water Systems

# Heavy Duty Gas Fired Water Heater

2 Tank Sizes:  
65 or 73 Gallons

5 Inputs: 125,000  
to 300,000 Btuh



Commercial  
Gas Fired  
Water Heater

Flexible  
Front and Rear  
Connections

BUILT TO LAST LONGER

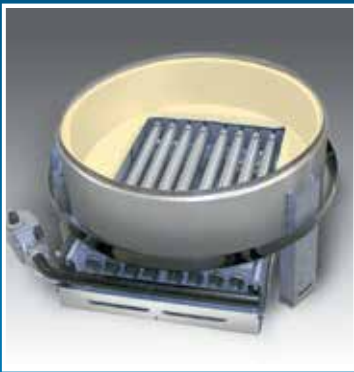
# HTP Heavy Duty Glass Lined Water Heater

## More Steel Where It Counts

Every commercial gas water heater endures constant day-to-day stress due to frequent changes in temperature. Critical stress points are located where tank components are welded – most notably at the flue tubes and where the tank bottom joins the tank. HTP has made these stress points much more leak resistant thru design, extra thick steel and special welding techniques.



The largest steel collar used in the industry is welded from outside of the tank bottom and top, permitting stronger welding of the flue tubes. The tank bottom and top and the flue tubes are glass-lined separately with an industrial grade coating of a blue cobalt glass.



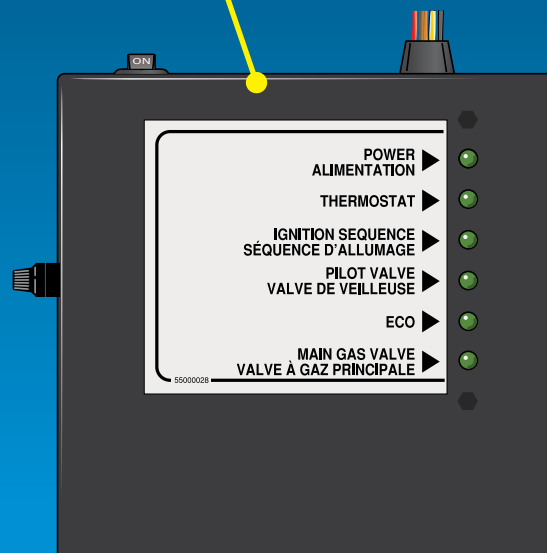
The refractory combustion chamber is insulated entirely with 3/4" of ceramic fiber. This feature permits better heat retention in the combustion chamber, translating into a higher heat exchange to the water.



## Technical Features:

- **Blue Cobalt Glass-lined tank**  
Long lasting blue cobalt glass is fused to specially formulated steel at 1,600°F to provide the best coating available against corrosion. The tank is certified at a test pressure of 300 PSI and a working pressure of 150 PSI.
- **Multi-port, energy efficient burners**  
Quiet Burner! The burner tray slides out easily for quick inspection & easy maintenance.
- **Low profile automatic flue damper**  
Closes automatically when the demand for heat stops, reducing stand-by heat loss.
- **High density insulation**
- **Automatic temp control system**  
The thermostat is fully adjustable up to 180°F. It is equipped with an integrated energy cut-off (ECO) and high temperature cut-off switch to protect against overheating.
- **Factory installed T&P relief valve**
- **Spark to pilot ignition system**
- **Intelligent led diagnostic system**  
Designed to give a visual indication of the operational status of the water heater. This panel also identifies where to begin troubleshooting a non-functional water heater.

**5 Year Warranty if Registered Online**



**Intelligent**

**LED**

**Diagnostic**

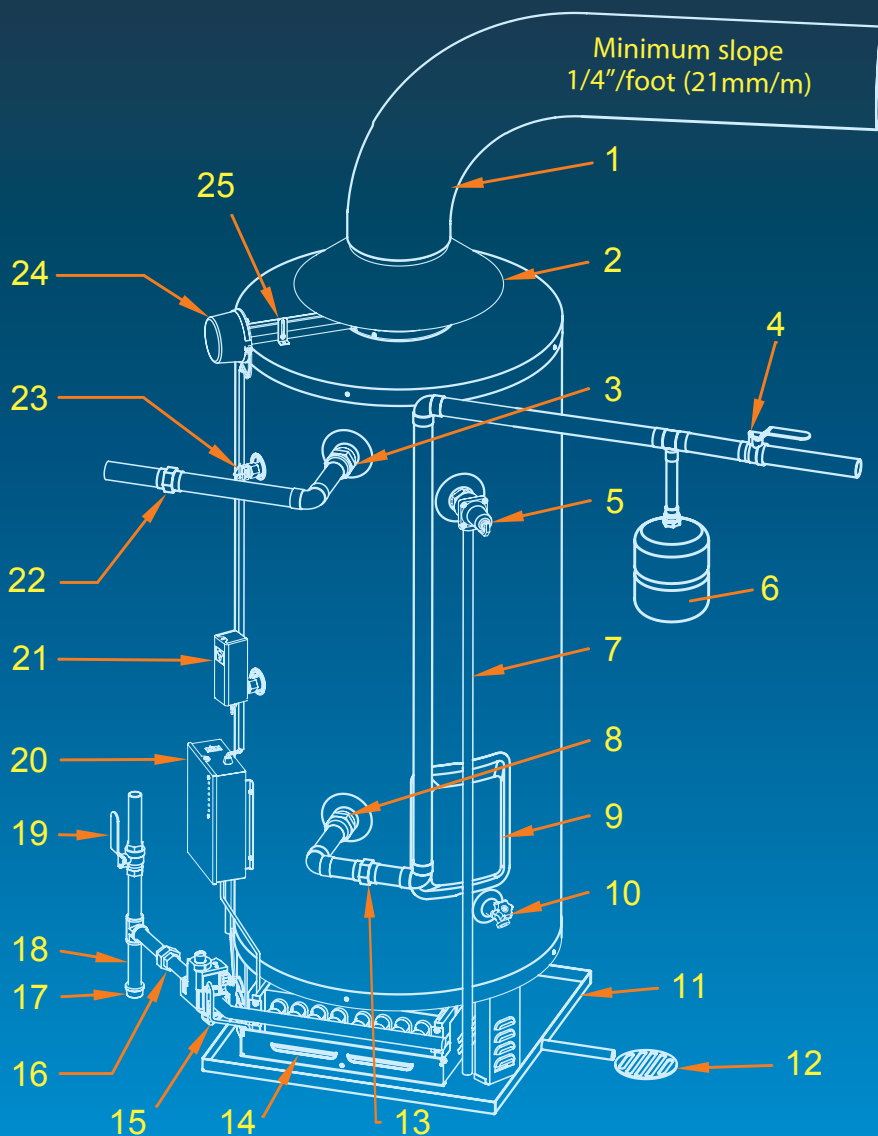
**System**

# A Look Inside

## HTP HEAVY DUTY COMMERCIAL WATER HEATER SPECIFICATIONS

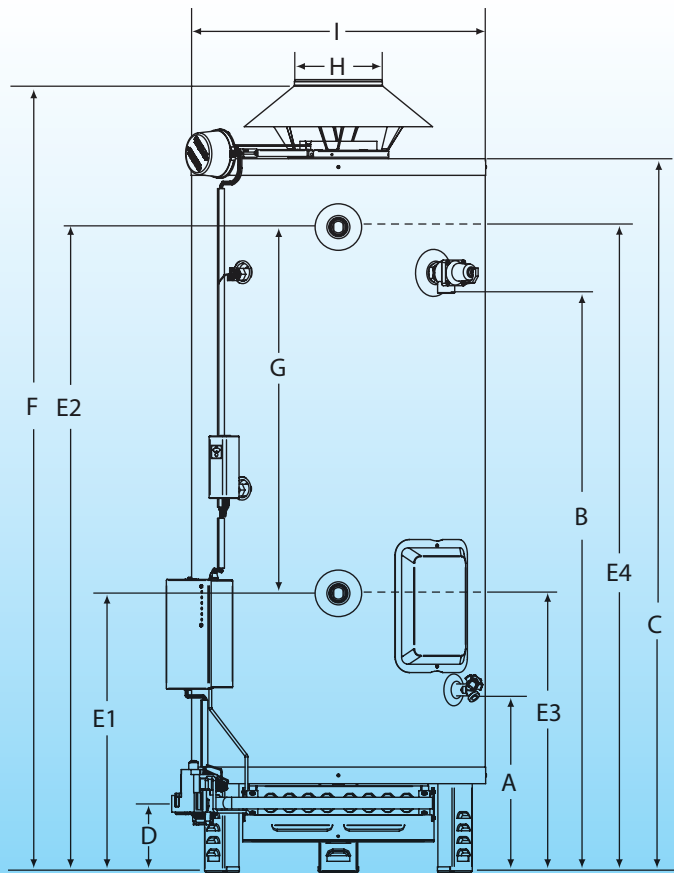
MODEL	BTU's	RECOVERY AT 100 ° F. RISE	GALLON CAPACITY	INLET/OUTLET SIZE	SHIPPING WEIGHT
CG125N73	125,000	121.2	73	1.5" NPT	429 LBS
CG150N73	150,000	145.5	73	1.5" NPT	429 LBS
CG199N73	199,000	193.8	73	1.5" NPT	429 LBS
CG250N65	250,000	242.4	65	1.5" NPT	465 LBS
CG300N65	300,000	290.9	65	1.5" NPT	465 LBS

High altitude kits available for units installed at altitudes over 7000 feet



- 1) Vent Pipe
- 2) Flue Damper / Draft hood Assembly
- 3) Hot Water Outlet
- 4) Cold Water Manual shut-off Valve
- 5) Temperature & Pressure Relief Valve
- 6) Expansion Tank
- 7) Overflow Tube
- 8) Cold Water Inlet
- 9) Cleanout Cover Access Door
- 10) Drain Valve
- 11) Drain Pan
- 12) Free-Flowing Floor Drain
- 13) Union
- 14) Burner Assembly
- 15) Gas Valve
- 16) Union
- 17) Cap
- 18) Drip Leg (Sediment Trap)
- 19) Gas Supply Manual Shut-off Valve
- 20) Electric Box
- 21) Aquastat / High Limit Control
- 22) Union
- 23) Temperature Sensor
- 24) Flue Damper Motor
- 25) Flue Damper Support Leg

# Dimensions & Specifications



## WHAT'S IN THE BOX

- Low Profile Automatic Flue Damper
- Intelligent LED Diagnostic System
- T & P Relief Valve
- Installation Manual

## STANDARD FEATURES

- High Density Insulation
- Multi-Flue Design
- Clean Out & Inspection Port
- Multi-Port Efficient Burners with Slide Out Tray for Easy Inspection
- Blue Cobalt Glass Lined
- Type B Venting
- 5 Year Limited Warranty If Registered Online

## OPTIONAL EQUIPMENT

- Power Vent and Aluminum Vent Hood Mounts On Outside Of Wall. Rust-Free Construction, Condensate Shield, Heat Shield, Mounting Hardware

## HEAVY DUTY GAS FIRED WATER HEATER DIMENSIONS

MODEL	A	B	C	D	E1	E2
CG250N65	15 3/4 (40)	52 1/8 (132)	64 3/8 (164)	6 3/8 (16)	25 1/4 (64)	58 1/4 (148)
CG300N65	15 3/4 (40)	52 1/8 (132)	64 3/8 (164)	6 3/8 (16)	25 1/4 (64)	58 1/4 (148)
CG125N73	15 3/4 (40)	52 1/2 (133)	64 3/8 (164)	6 3/8 (16)	25 1/4 (64)	58 1/4 (148)
CG150N73	15 3/4 (40)	52 1/2 (133)	64 3/8 (164)	6 3/8 (16)	25 1/4 (64)	58 1/4 (148)
CG199N73	15 3/4 (40)	52 1/2 (133)	64 3/8 (164)	6 3/8 (16)	25 1/4 (64)	58 1/4 (148)
MODEL	E3	E4	F	G	H	I
CG250N65	25 1/4 (64)	58 1/4 (148)	70 7/8 (180)	33 (84)	7 (18)	26 1/2 (67)
CG300N65	25 1/4 (64)	58 1/4 (148)	71 5/8 (182)	33 (84)	8 (20)	26 1/2 (67)
CG125N73	25 1/4 (64)	58 1/4 (148)	69 1/4 (176)	33 (84)	5 (13)	26 1/2 (67)
CG150N73	25 1/4 (64)	58 1/4 (148)	70 7/8 (180)	33 (84)	6 (15)	26 1/2 (67)
CG199N73	25 1/4 (64)	58 1/4 (148)	70 7/8 (180)	33 (84)	6 (15)	26 1/2 (67)

\* Models of 125,000 and 150,000 Btuh and their derated versions can also use a 1/2" gas connection.

